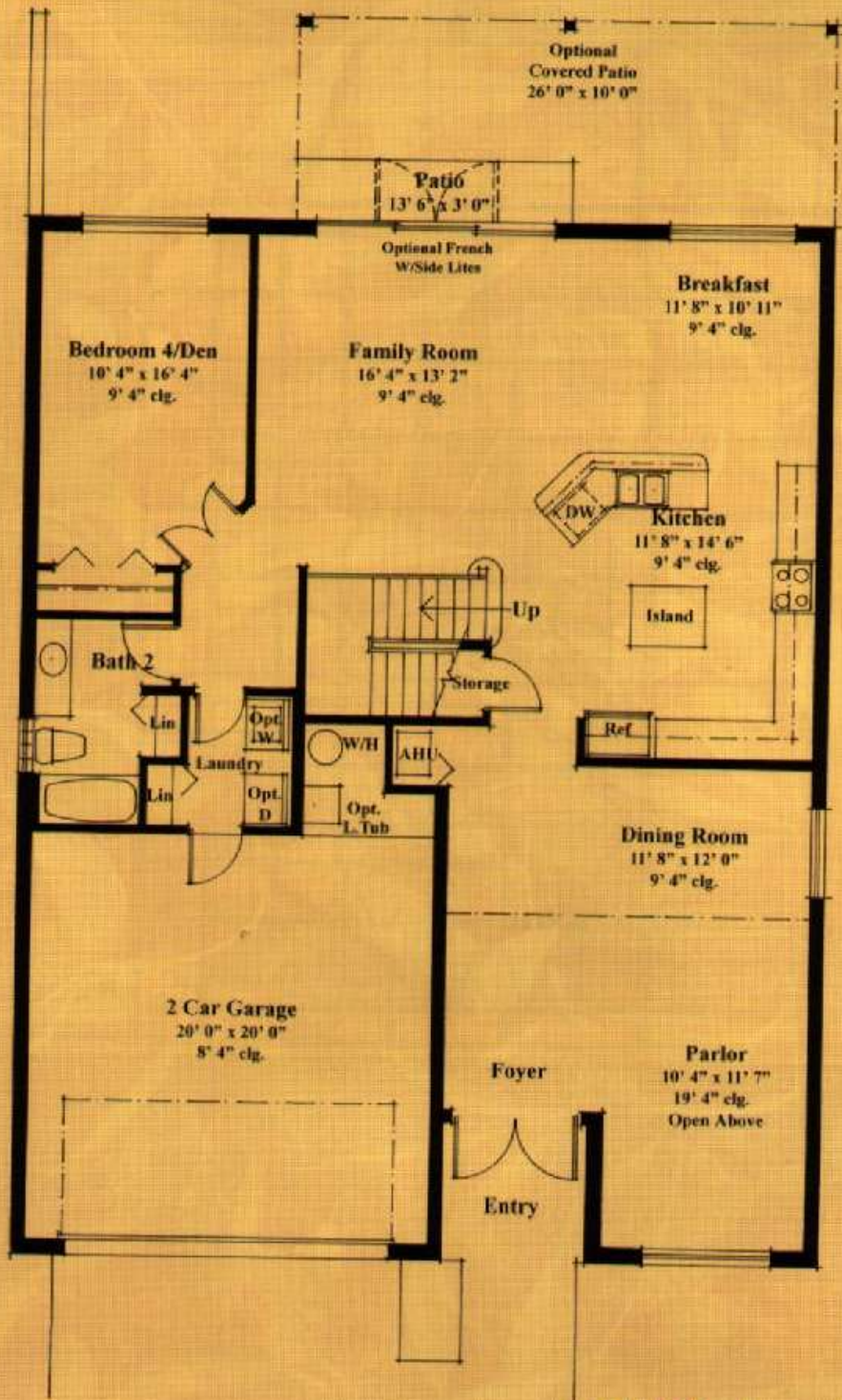


ELEVATION A

In the interest of continuous product improvements and to meet changing market conditions, the builder reserves the right to modify maps, floorplans, exterior, specifications, features, prices and product types without prior notice or obligation. Some features may vary from plan to plan. All maps, plans, and elevation drawings are for informational purposes only. All landscaping is approximate. Landscaping may vary as to maturity, number and species.



Optional  
Covered Patio  
26' 0" x 10' 0"

Patio  
13' 6" x 3' 0"

Optional French  
W/Side Lites

Breakfast  
11' 8" x 10' 11"  
9' 4" clg.

Bedroom 4/Den  
10' 4" x 16' 4"  
9' 4" clg.

Family Room  
16' 4" x 13' 2"  
9' 4" clg.

Kitchen  
11' 8" x 14' 6"  
9' 4" clg.

Bath 2

Up

Storage

Opt.  
L.W.

Laundry

W/H

AHU

Lin

Opt.  
D

Opt.  
L. Tub

Ref

Dining Room  
11' 8" x 12' 0"  
9' 4" clg.

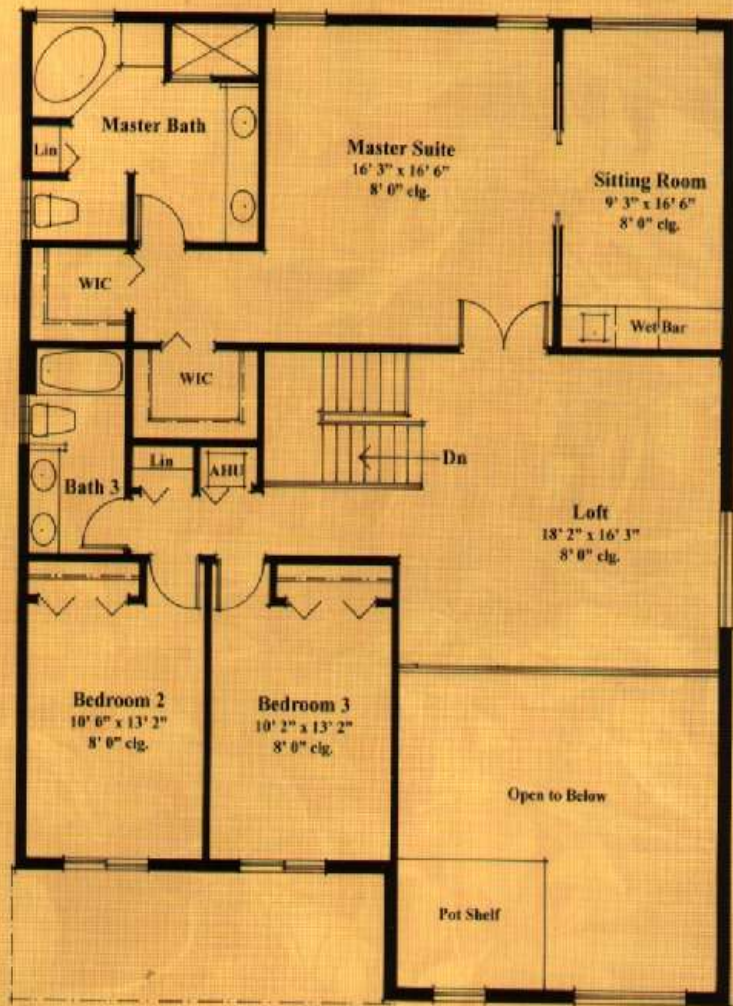
2 Car Garage  
20' 0" x 20' 0"  
8' 4" clg.

Foyer

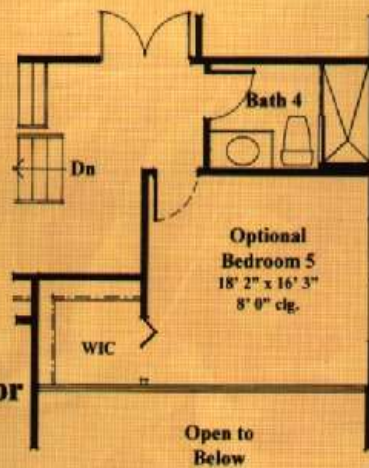
Parlor  
10' 4" x 11' 7"  
19' 4" clg.  
Open Above

Entry

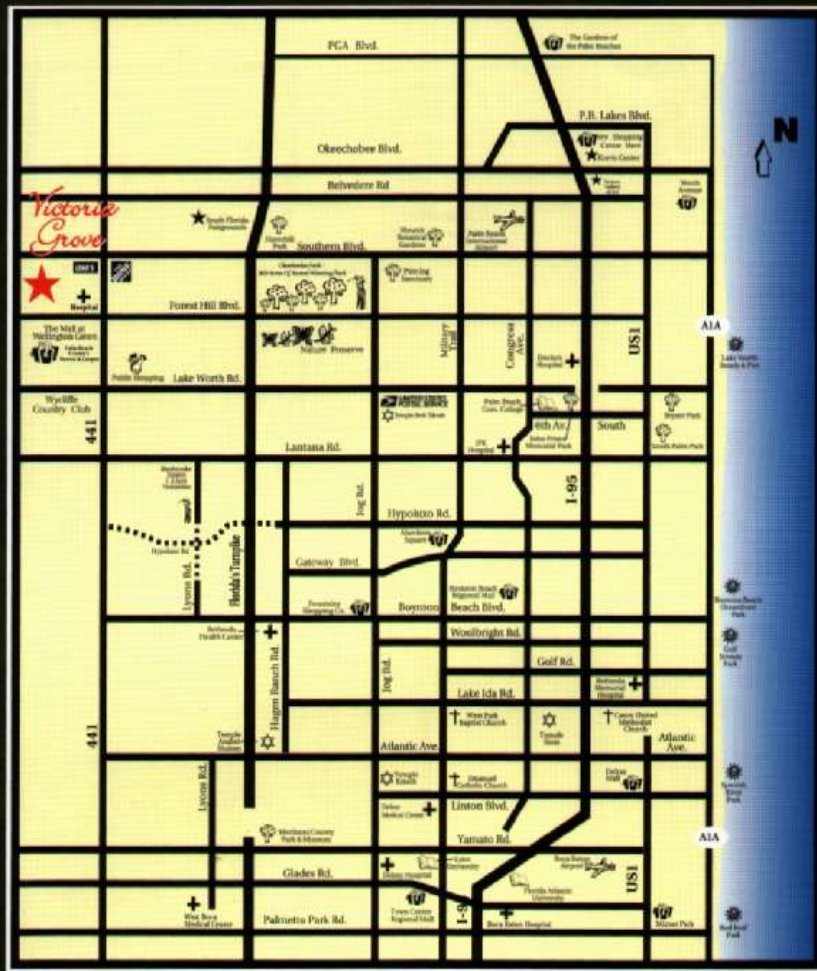
**First Floor**



First Floor	1527 SQ. FT.
Second Floor	1505 SQ. FT.
A/C Area	3032 SQ. FT.
Garage	460 SQ. FT.
Entry	56 SQ. FT.
<b>TOTAL</b>	<b>3548 SQ. FT.</b>
W/opt. cov.patio	267 SQ. FT.
<b>TOTAL cov.area w/option</b>	<b>3815 SQ. FT.</b>
Patio	41 SQ. FT.



**Second Floor**




**TRANSEASTERN  
HOMES**  
BUILT WITH *pride*



# Victoria Grove



For more information call 561-333-9696 • [www.victoriagroves.com](http://www.victoriagroves.com)

Directions: Turnpike heading north: Exit Lake Worth Rd. go west to US 441 (SR7), turn right (north) 3.5 miles to Anthony Groves Rd. west side.  
 Turnpike heading south: Exit Okeechobee Blvd. go west to US 441 (SR7) turn left (south) passed Southern Blvd. west side.