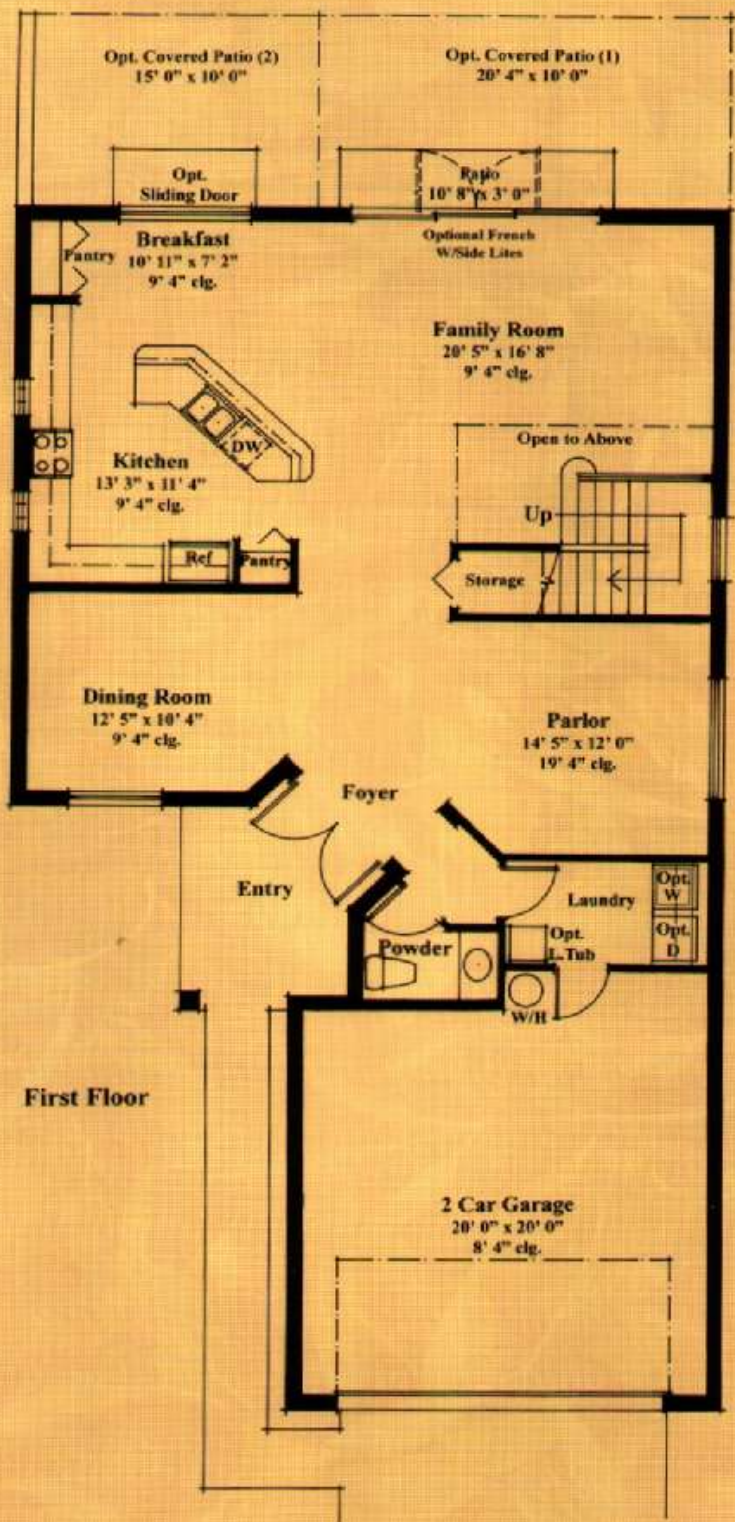


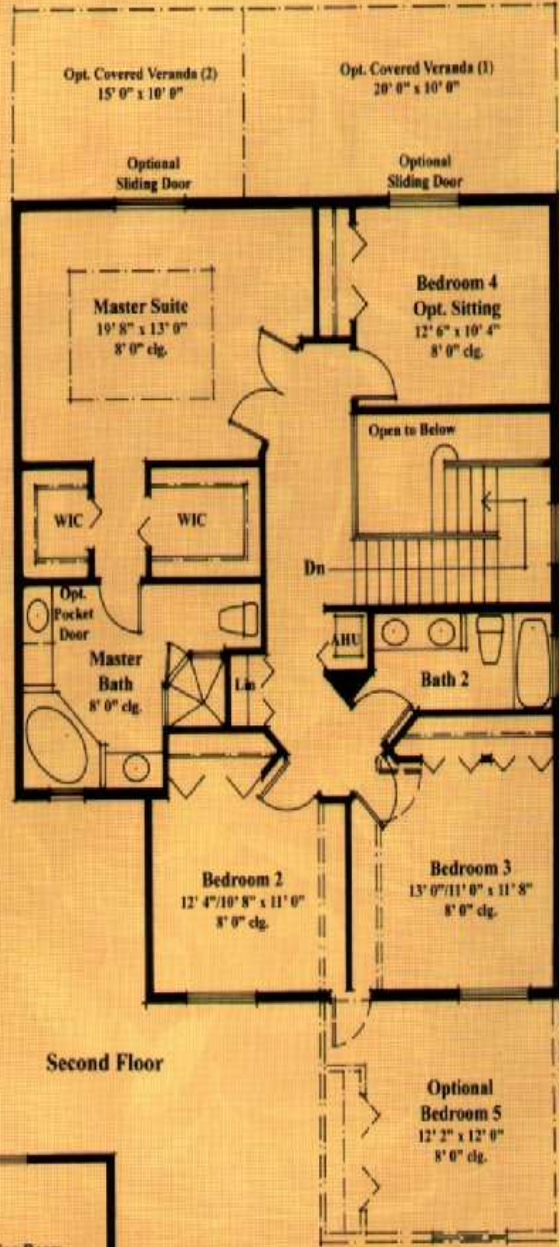


ELEVATION A

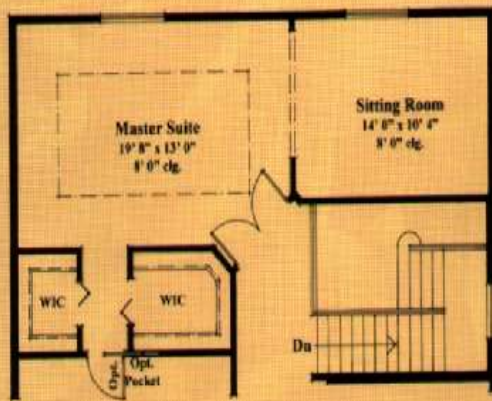
In the interest of continuous product improvements and to meet changing market conditions, the builder reserves the right to modify maps, floorplans, exterior, specifications, features, prices and product types without prior notice or obligation. Some features may vary from plan to plan. All maps, plans, and elevation renderings are artist's conceptions and not necessarily to scale. All square footages are approximate. Landscape may vary as to maturity, number and species.



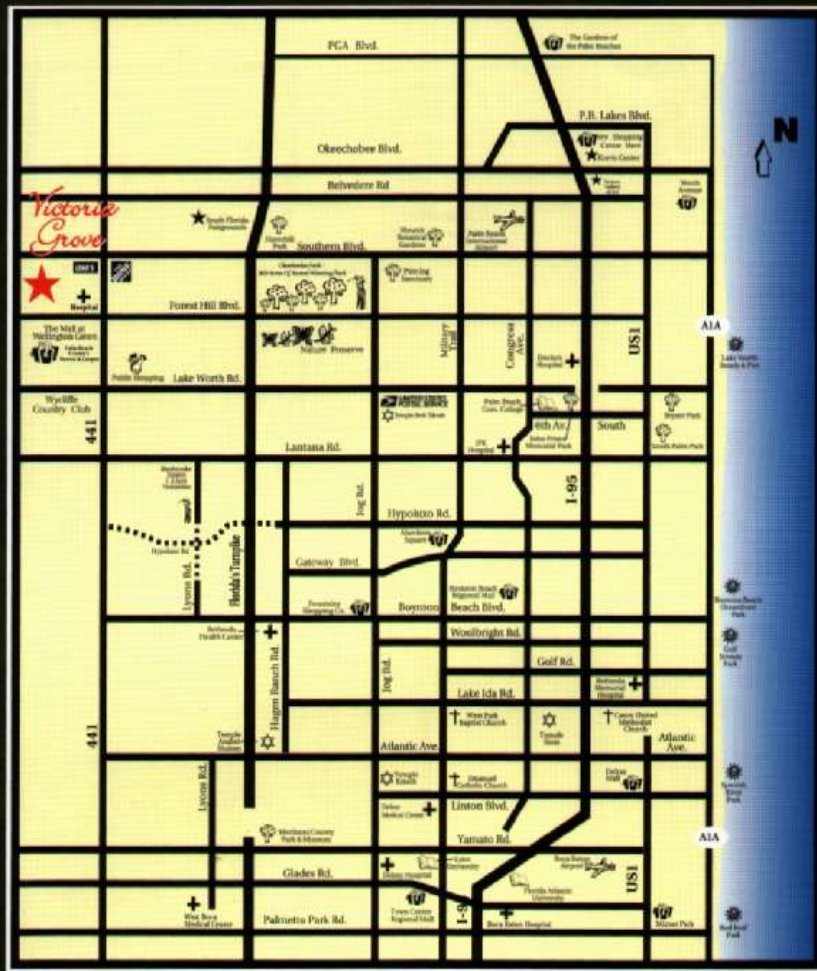
First Floor	1248 SQ. FT.
Second Floor	1238 SQ. FT.
A/C Area	2486 SQ. FT.
Garage	462 SQ. FT.
Entry	90 SQ. FT.
TOTAL	3038 SQ. FT.*
W/opt. cov.patio ⁽¹⁾	203 SQ. FT.
W/opt. cov.patio ⁽²⁾	350 SQ. FT.*
W/opt. cov.veranda ⁽¹⁾	203 SQ. FT.
W/opt. cov.veranda ⁽²⁾	350 SQ. FT.*
W/opt. bedroom 5	204 SQ. FT.*
W/opt. sitting area	16 SQ. FT.*
TOTAL cov.area	3958 SQ. FT.*
*w/option	
Patio	41 SQ. FT.



Second Floor



Sitting Room Option




**TRANSEASTERN
HOMES**
BUILT WITH *pride*



Victoria Grove



For more information call 561-333-9696 • www.victoriagroves.com

Directions: Turnpike heading north: Exit Lake Worth Rd. go west to US 441 (SR7), turn right (north) 3.5 miles to Anthony Groves Rd. west side.
Turnpike heading south: Exit Okeechobee Blvd. go west to US 441 (SR7) turn left (south) passed Southern Blvd. west side.