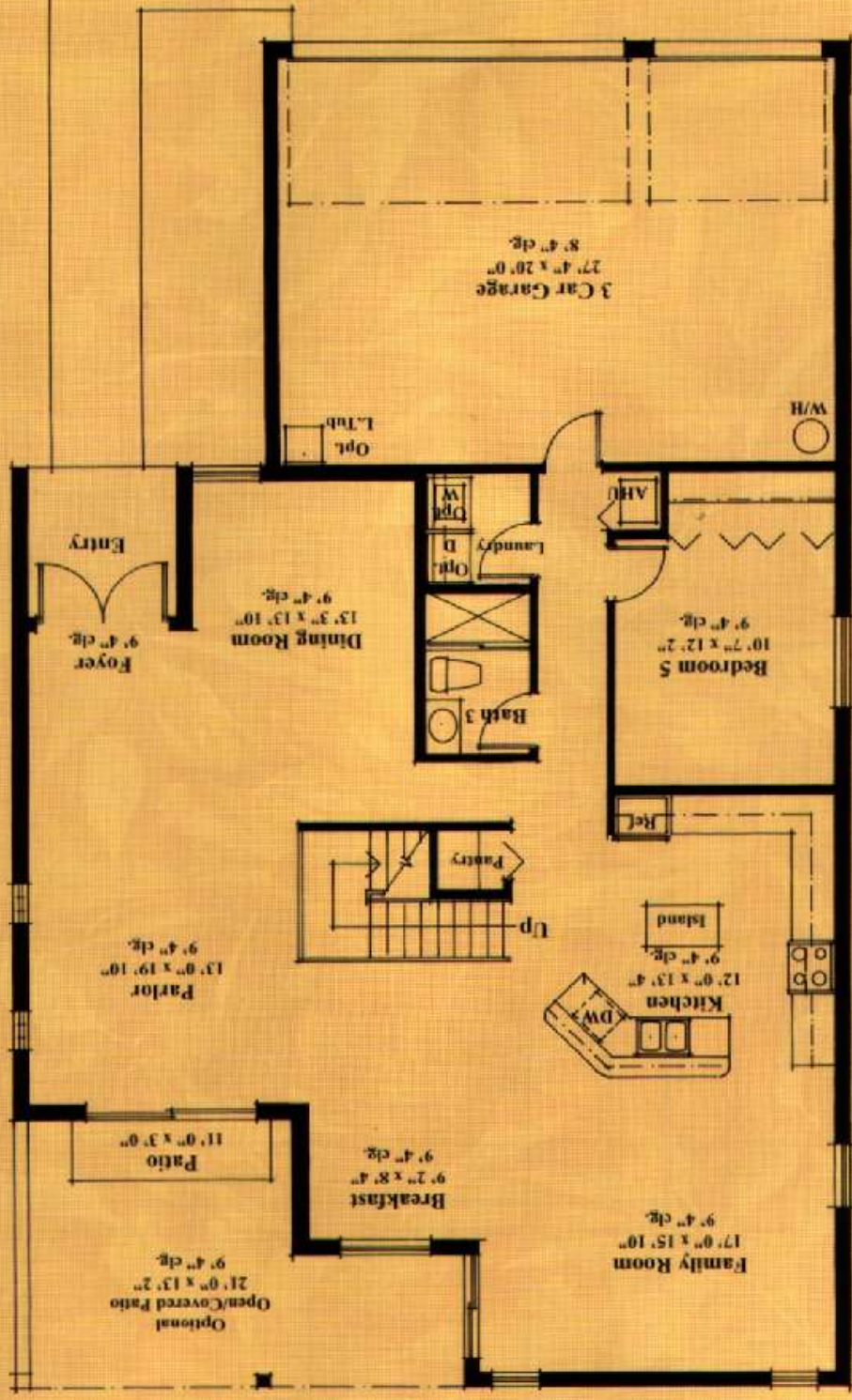


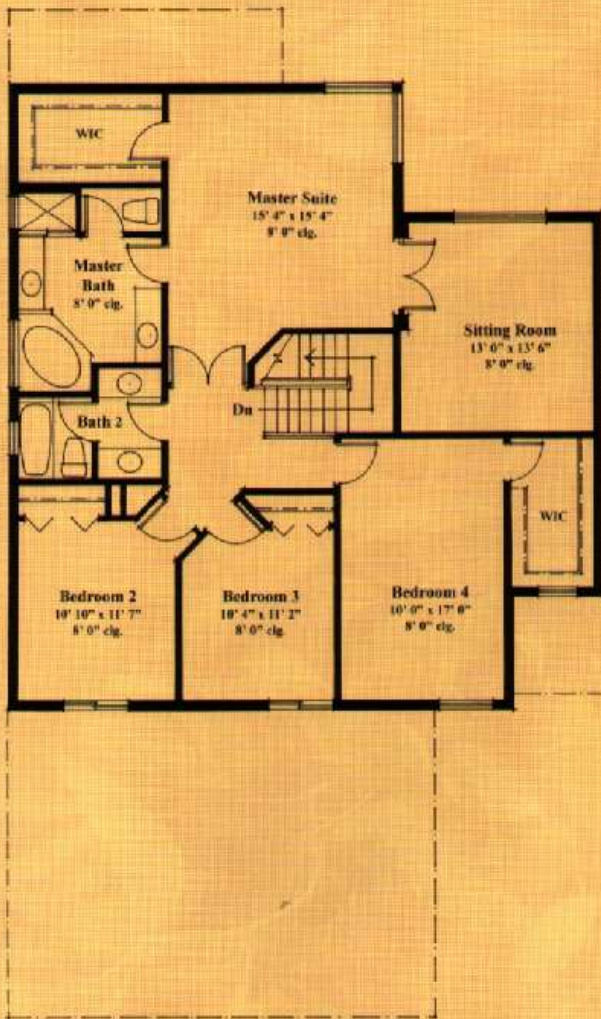


ELEVATION A

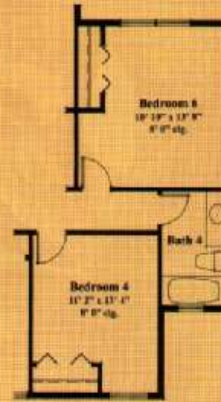
In the interest of continuous product improvements and to meet changing market conditions, the builder reserves the right to modify maps, floorplans, exterior, specifications, features, prices and product types without prior notice or obligation. Some features may vary from plan to plan. All maps, plans, and elevation drawings are approximate. Landscape may vary as to maturity, number and species.

First Floor

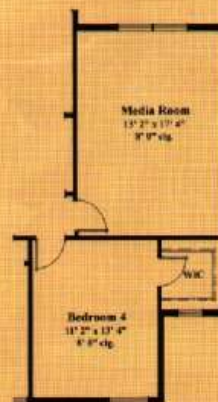




Bedroom 6 Option



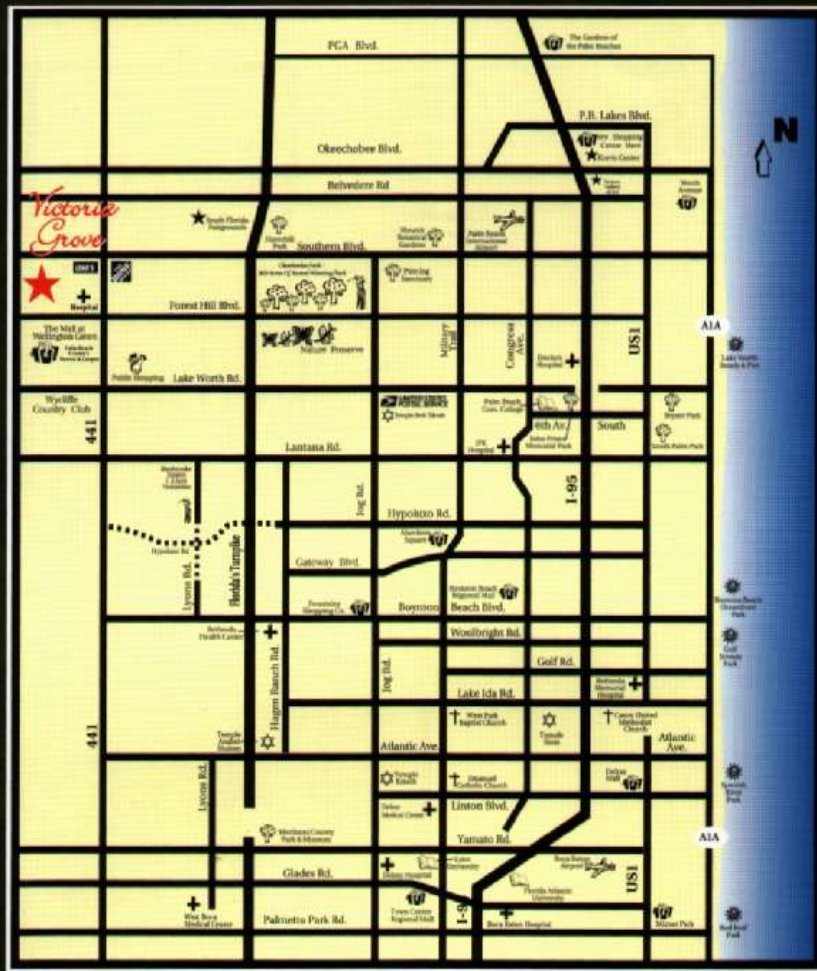
Bedroom 6 and Bath 4 Option



Media Room Option

First Floor	1514 SQ. FT.
Second Floor	1399 SQ. FT.
A/C Area	2913 SQ. FT.
Garage	583 SQ. FT.
Entry	57 SQ. FT.
TOTAL	3553 SQ. FT.
W/opt. bedroom	195 SQ. FT.*
or W/opt. media room	195 SQ. FT.
W/opt. cov. patio	231 SQ. FT.*
TOTAL cov. area	3979 SQ. FT.*
	*w/option
Patio	33 SQ. FT.

Second Floor




**TRANSEASTERN
HOMES**
BUILT WITH *pride*



Victoria Grove



For more information call 561-333-9696 • www.victoriagroves.com

Directions: Turnpike heading north: Exit Lake Worth Rd. go west to US 441 (SR7), turn right (north) 3.5 miles to Anthony Groves Rd. west side.
Turnpike heading south: Exit Okeechobee Blvd. go west to US 441 (SR7) turn left (south) passed Southern Blvd. west side.