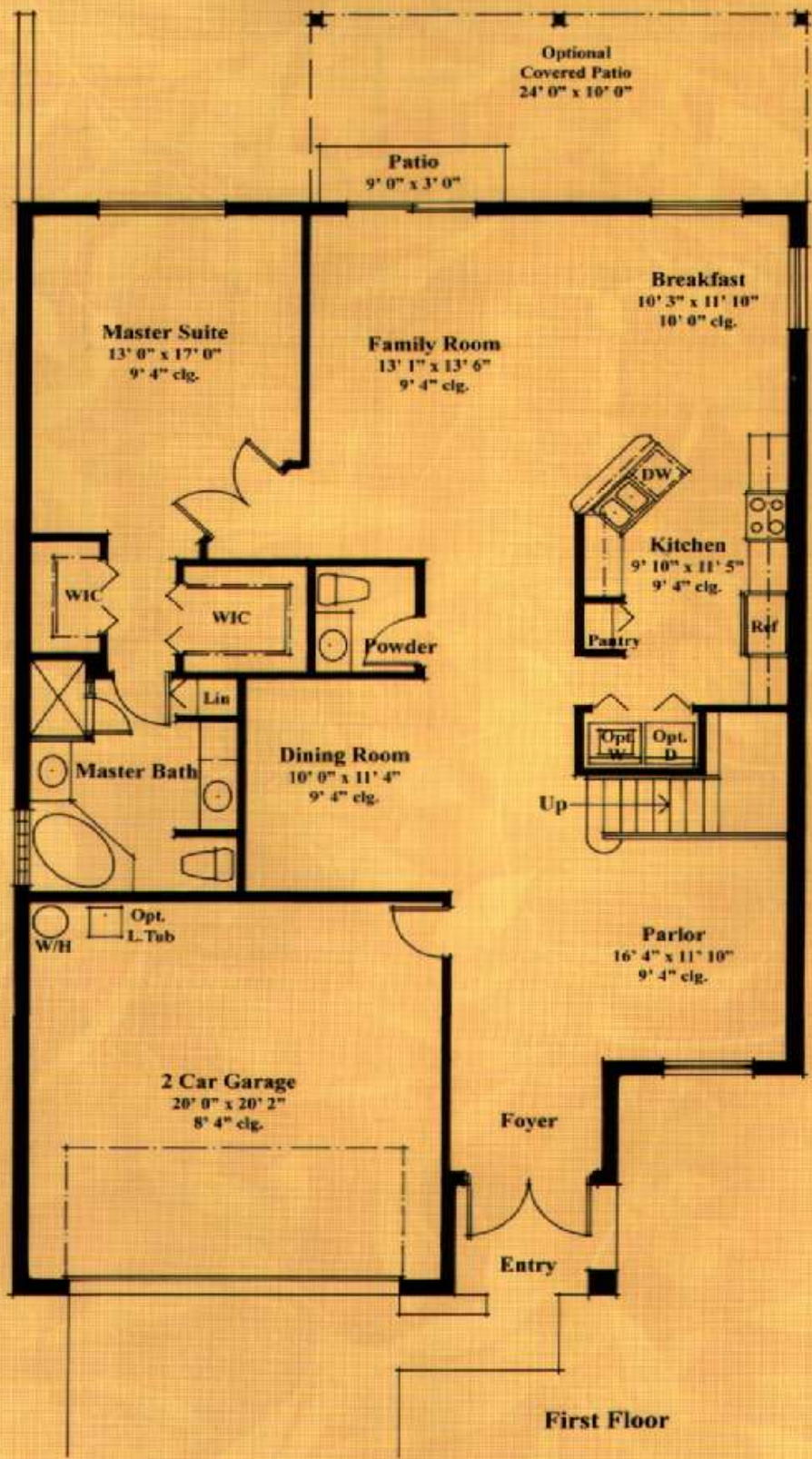
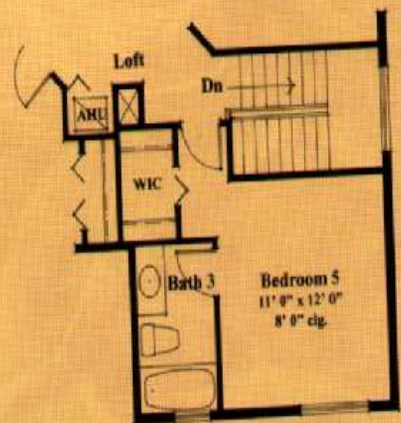
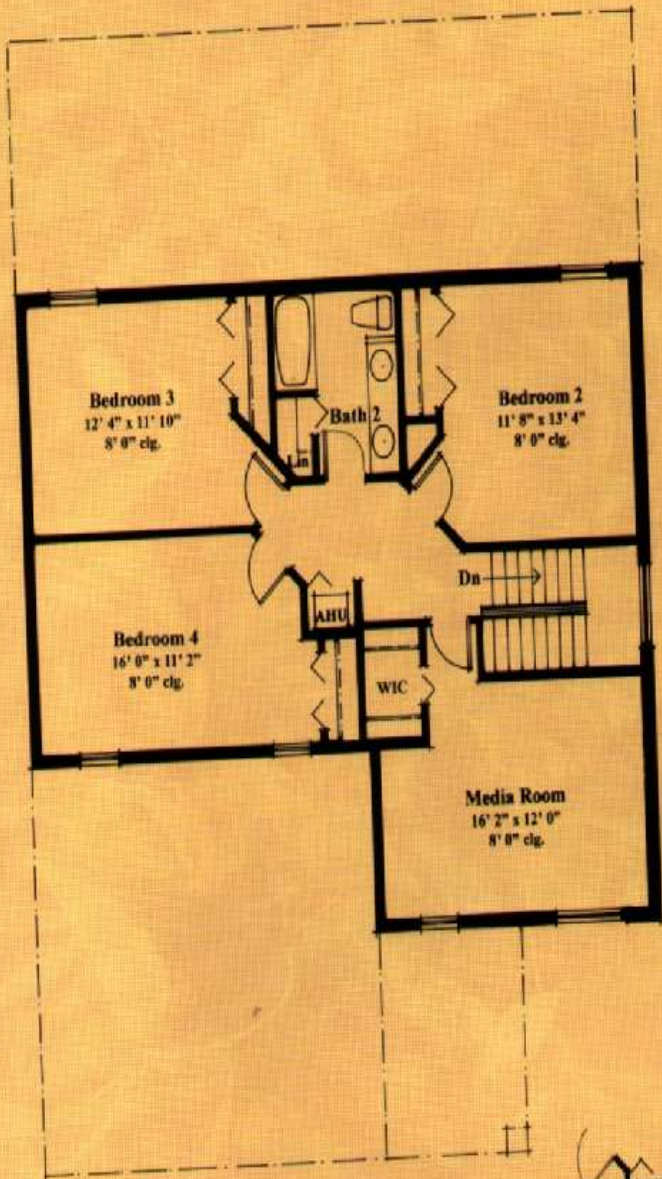


In the interest of continuous product improvements and to meet changing market conditions, the builder reserves the right to modify maps, floorplans, exterior specifications, features, prices and product types without prior notice or obligation. Some features may vary from plan to plan. All maps, plans, and elevation drawings are for informational purposes only. Landscaping may vary as to maturity, number and species.

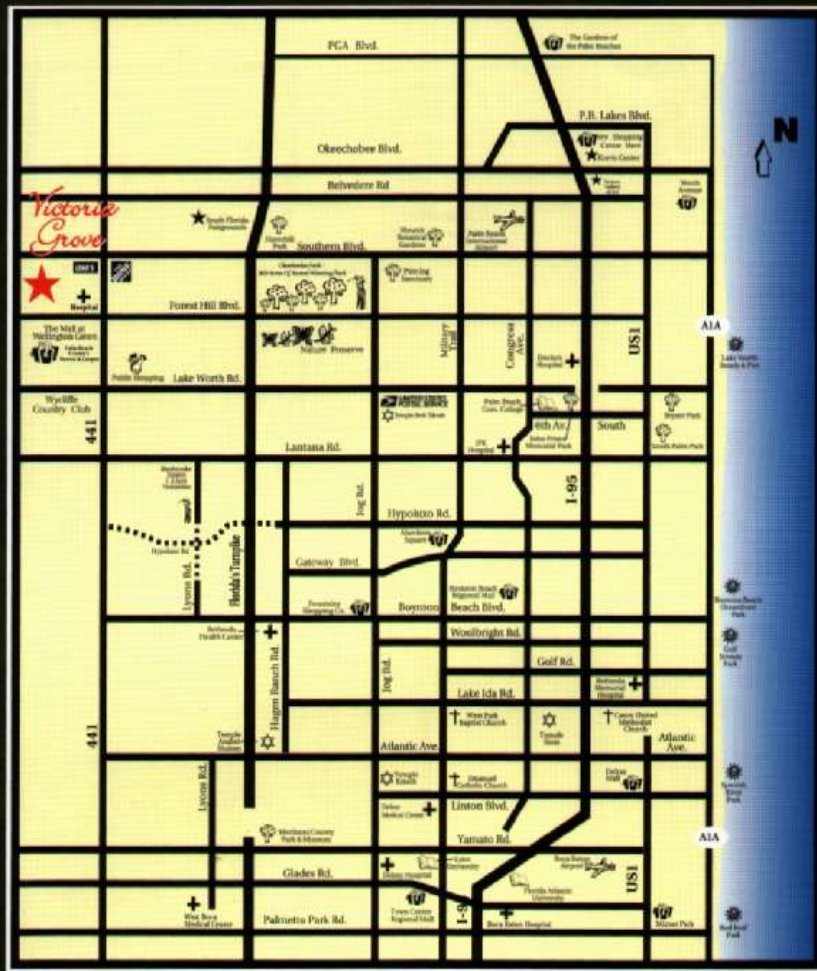




First Floor	1623 SQ. FT.
Second Floor	1011 SQ. FT.
A/C Area	2634 SQ. FT.
Garage	434 SQ. FT.
Entry	48 SQ. FT.
<b>TOTAL</b>	<b>3116 SQ. FT.</b>
W/opt. cov.patio	240 SQ. FT.
<b>TOTAL cov.area</b>	<b>3356 SQ. FT.*</b>
Patio	27 SQ. FT.
	*w/option

**Second Floor**

**Bedroom 5  
Bath 3 Opt.**




**TRANSEASTERN  
HOMES**  
BUILT WITH *pride*



# Victoria Grove



For more information call 561-333-9696 • [www.victoriagroves.com](http://www.victoriagroves.com)

Directions: Turnpike heading north: Exit Lake Worth Rd. go west to US 441 (SR7), turn right (north) 3.5 miles to Anthony Groves Rd. west side.  
Turnpike heading south: Exit Okeechobee Blvd. go west to US 441 (SR7) turn left (south) passed Southern Blvd. west side.