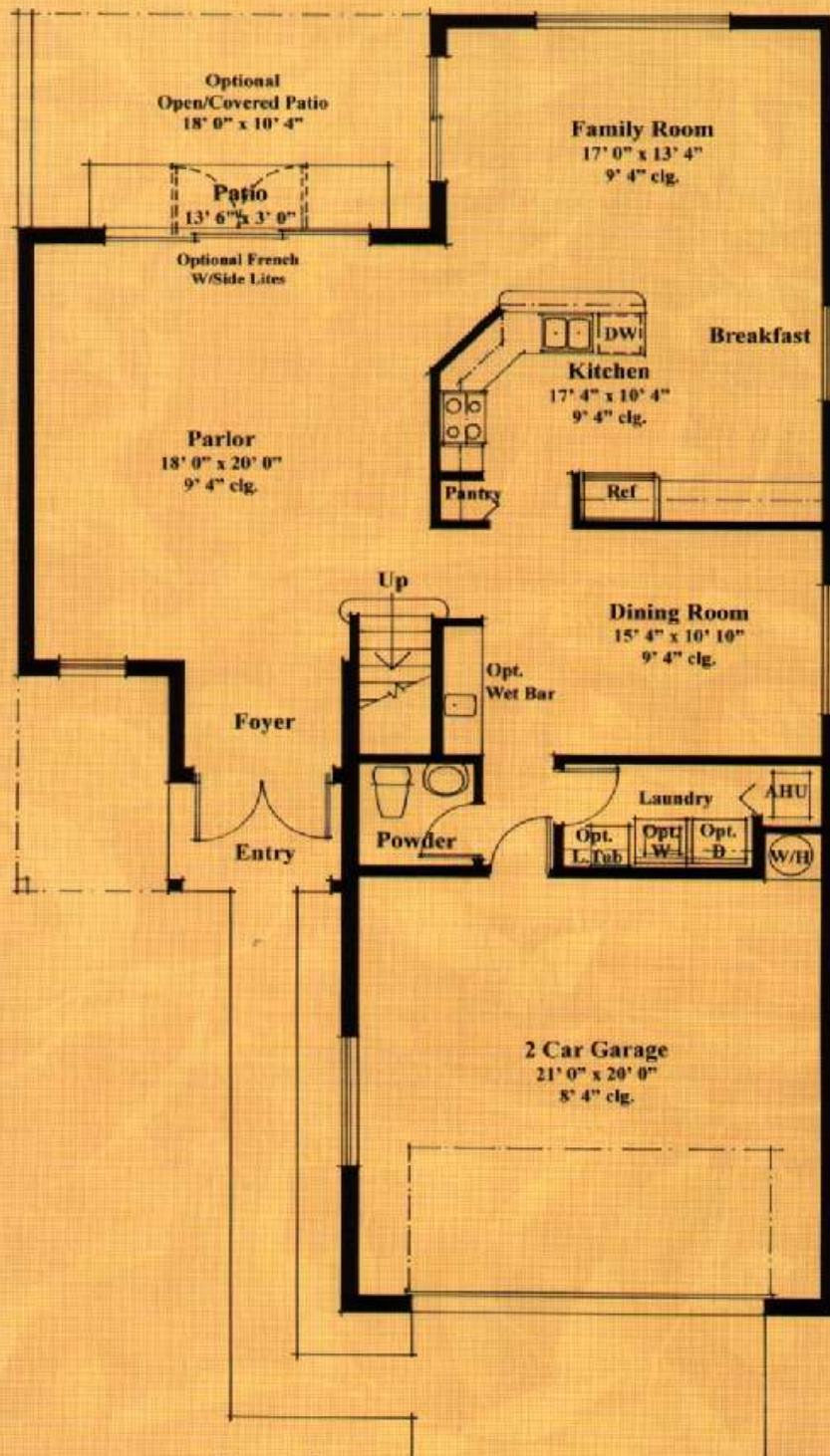


ELEVATION A

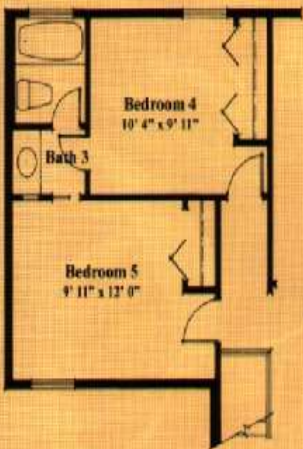
In the interest of continuous product improvements and to meet changing market conditions, the builder reserves the right to modify maps, floorplans, exterior, specifications, features, prices and product types without prior notice or obligation. Some features may vary from plan to plan. All maps, plans, and elevation renderings are artist's conceptions and not necessarily to scale. All square footage's are approximate. Landscape may vary as to maturity, number and species.



First Floor

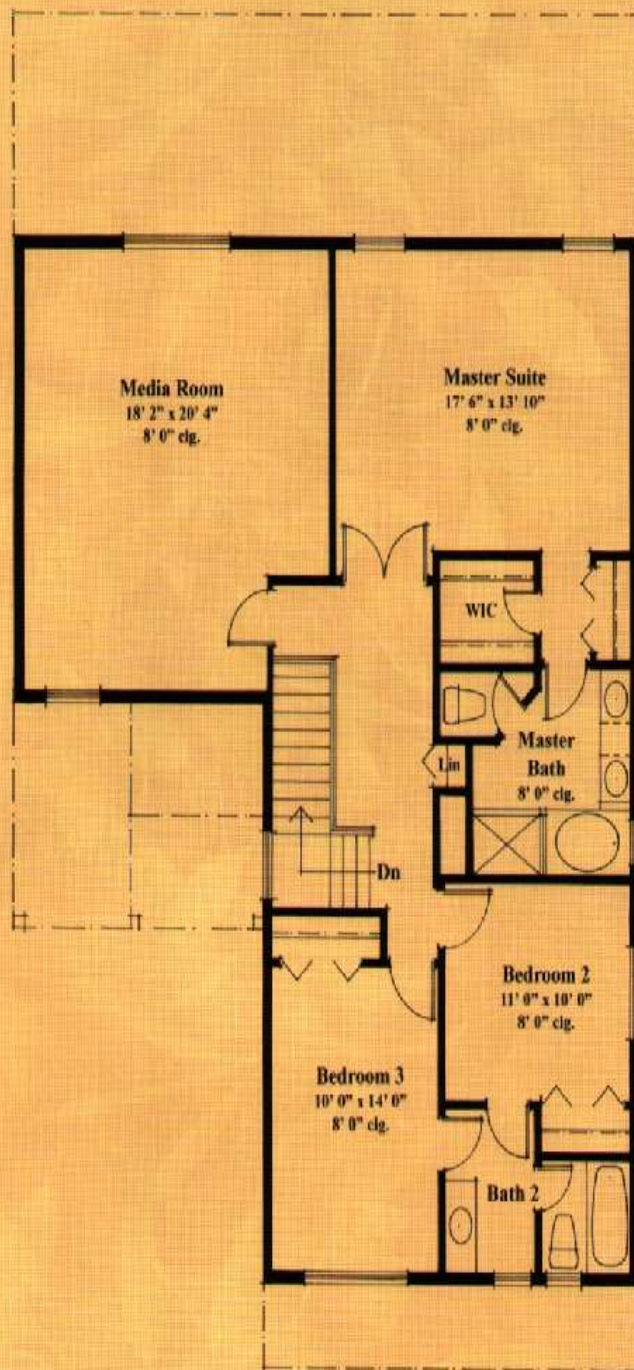


**Bedroom 4
Bath 3 Opt.**

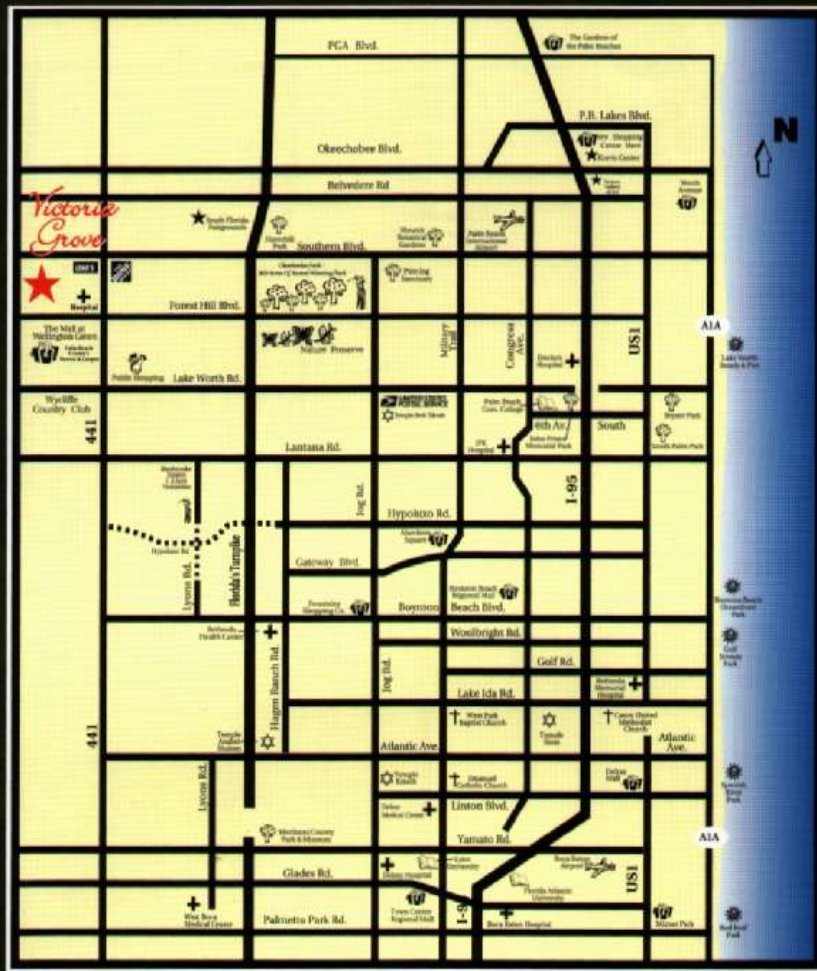


**Bedroom 4 and 5
Bath 3 Opt.**

First Floor	1228 SQ. FT.
Second Floor	1330 SQ. FT.
A/C Area	2558 SQ. FT.
Garage	469 SQ. FT.
Entry	40 SQ. FT.
TOTAL	3067 SQ. FT.
W/opt. cov.patio	193 SQ. FT.
TOTAL cov.area	3260 SQ. FT.*
	*w/option
Patio	41 SQ. FT.



Second Floor




Victoria Grove



For more information call 561-333-9696 • www.victoriagroves.com

Directions: Turnpike heading north: Exit Lake Worth Rd. go west to US 441 (SR7), turn right (north) 3.5 miles to Anthony Groves Rd. west side.
 Turnpike heading south: Exit Okeechobee Blvd. go west to US 441 (SR7) turn left (south) passed Southern Blvd. west side.