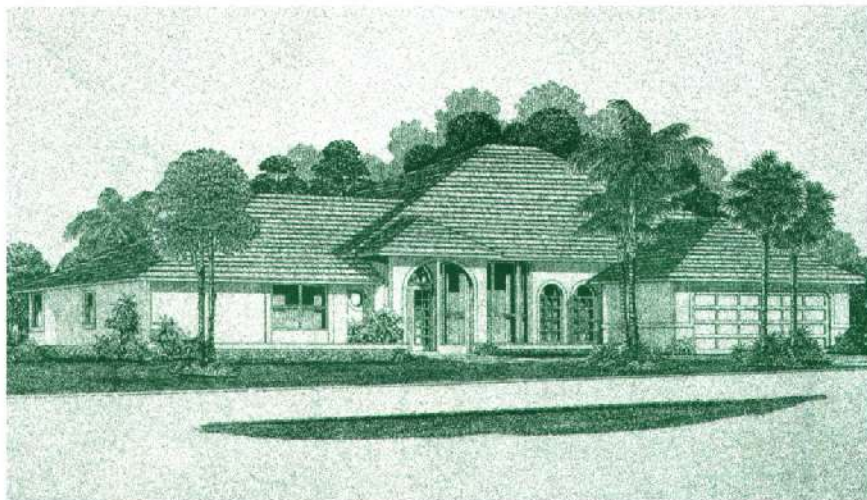

Brentwood 
4 Bedroom, 3 1/2 Bath, 2 Car Garage
Lakefield West in The Landings at Wellington.



Artist's conception.

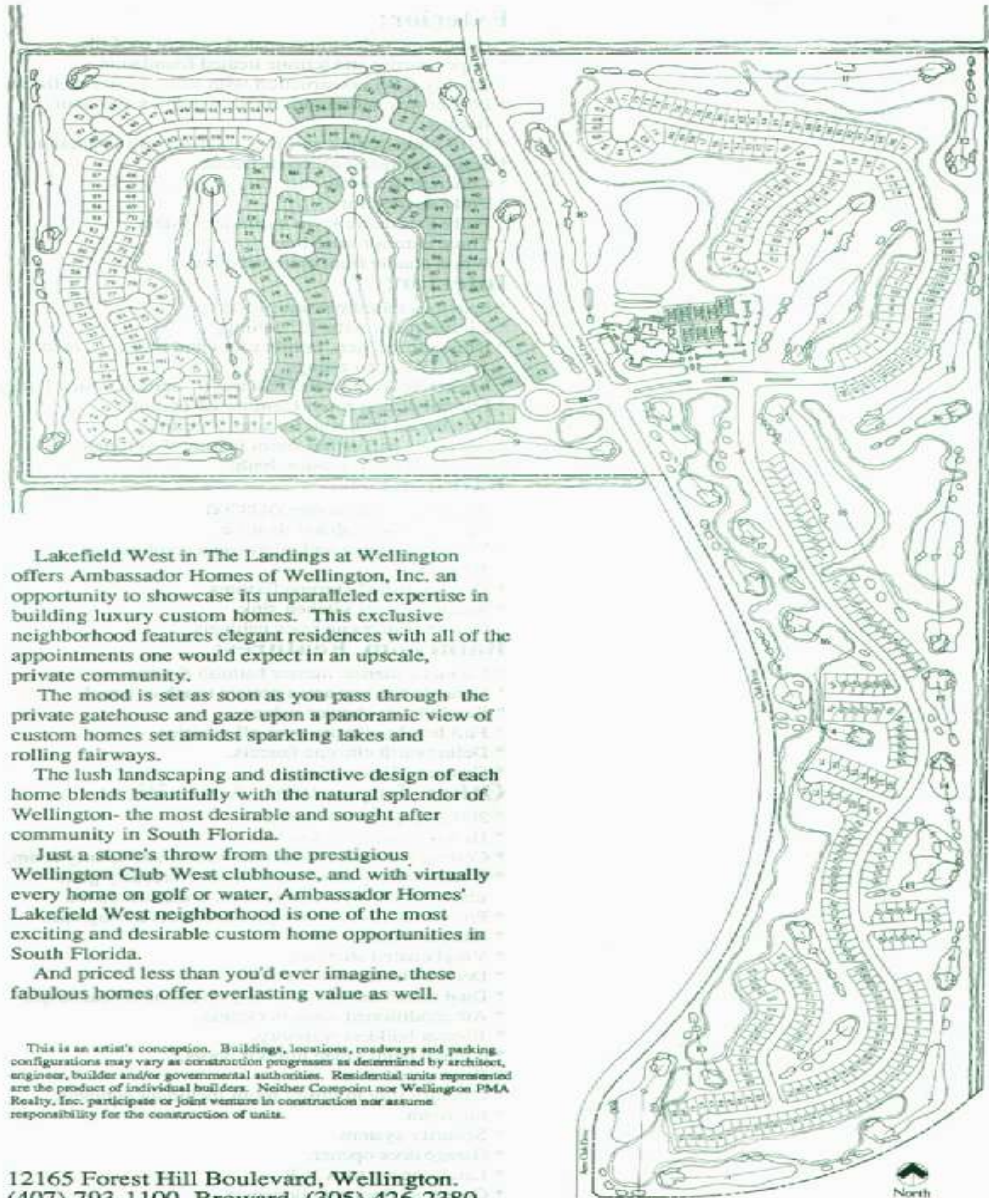


When it comes to superior craftsmanship and solid financial backing, few builders in South Florida can compete with Ambassador Homes of Wellington. Its parent company, Ambassador Homes, is part of the \$200 million strong Ambassador Financial Group, and is today one of the largest volume custom single-family builders on the Gold Coast.

Through Ambassador Homes of Wellington and its other building divisions, Ambassador Homes has created luxury homes in many of the most prestigious country club communities in Palm Beach and Broward counties.

Under the progressive leadership of Ron Blum and Tom Gepfrich, Ambassador Homes has become associated with the highest standard of quality and an unsurpassed reputation for service. From design conception to actual construction and finishing touches, Ambassador Homes maintains a profound commitment to every facet of the building process. It is for that reason Ambassador is able to time and time again satisfy the most discriminating of clientele.

In Lakefield West, in The Landings at Wellington, new home buyers choosing to build with Ambassador benefit from the far-reaching experience of Ron Blum and Tom Gepfrich. As two of the southeast's most highly-regarded builders, Ron and Tom have successfully completed more than 1,000 finely crafted homes in the area. Their respected names in the industry are confirmed by the many families who have built second and even third homes through Ambassador.



Lakefield West in The Landings at Wellington offers Ambassador Homes of Wellington, Inc. an opportunity to showcase its unparalleled expertise in building luxury custom homes. This exclusive neighborhood features elegant residences with all of the appointments one would expect in an upscale, private community.

The mood is set as soon as you pass through the private gatehouse and gaze upon a panoramic view of custom homes set amidst sparkling lakes and rolling fairways.

The lush landscaping and distinctive design of each home blends beautifully with the natural splendor of Wellington- the most desirable and sought after community in South Florida.

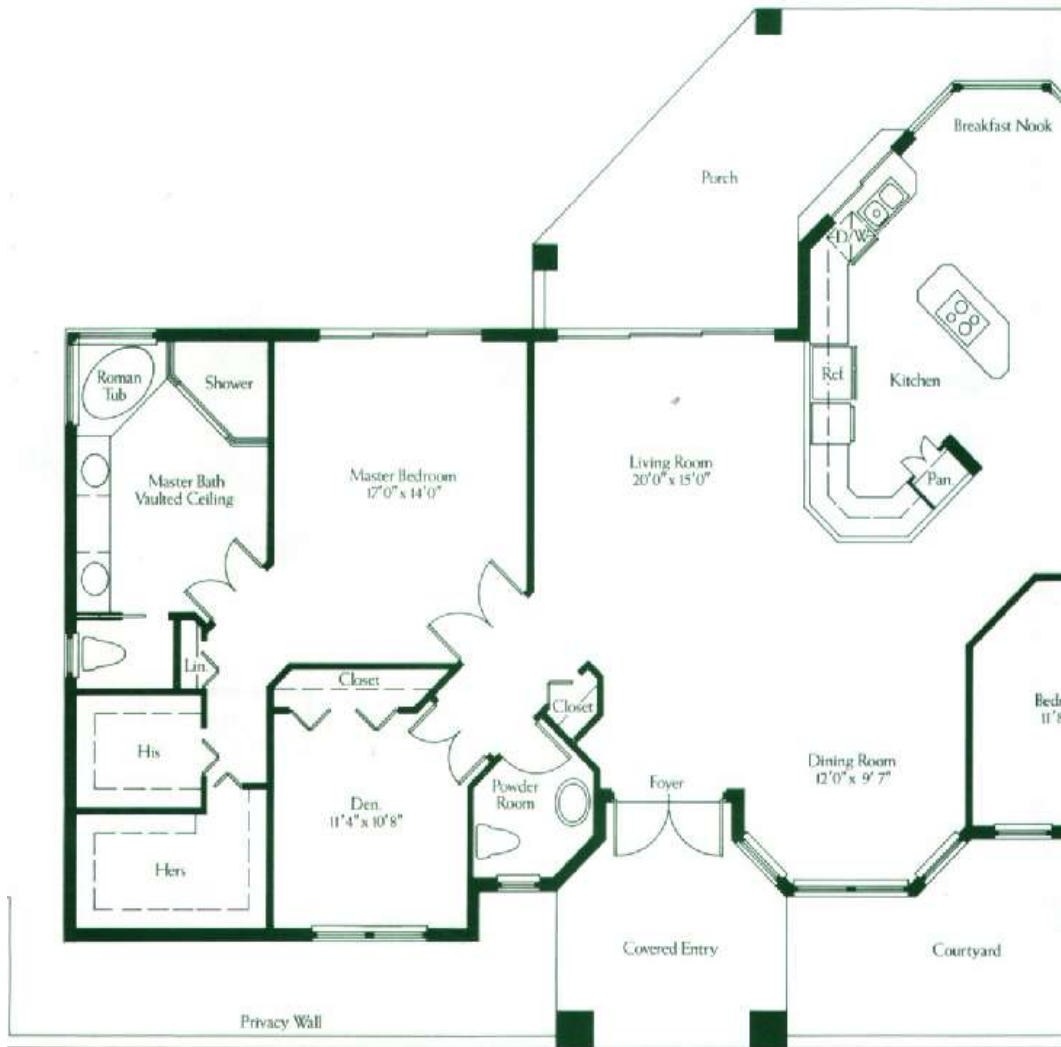
Just a stone's throw from the prestigious Wellington Club West clubhouse, and with virtually every home on golf or water, Ambassador Homes' Lakefield West neighborhood is one of the most exciting and desirable custom home opportunities in South Florida.

And priced less than you'd ever imagine, these fabulous homes offer everlasting value as well.

This is an artist's conception. Buildings, locations, roadways and parking configurations may vary as construction progresses as determined by architect, engineer, builder and/or governmental authorities. Residential units represented are the product of individual builders. Neither Cospoint nor Wellington PMA Realty, Inc. participate or joint venture in construction nor assume responsibility for the construction of units.

12165 Forest Hill Boulevard, Wellington.
(407) 793-1100. Broward, (305) 426-2380.

**4 Bedroom
Lakefield West in**



All dimensions, specifications and features are approximate and subject to change without notice.

