

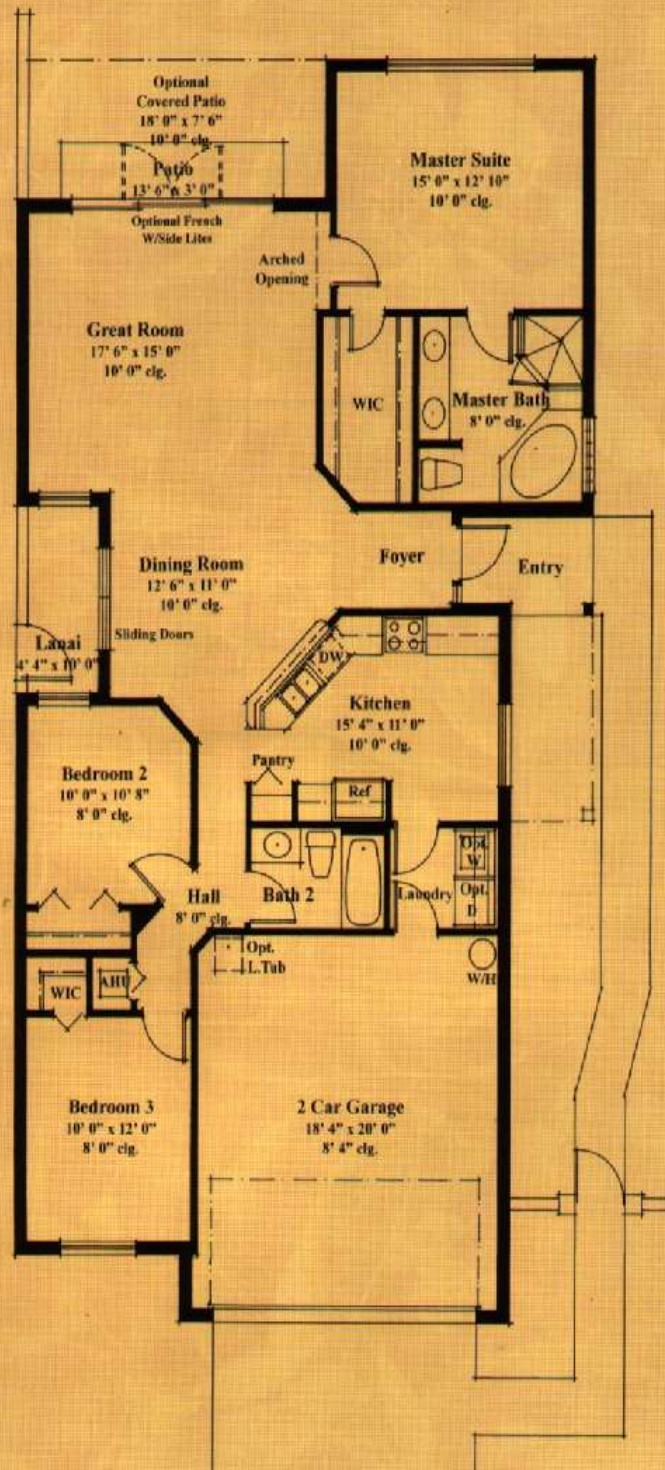
ELEVATION A



ELEVATION B



In the interest of continuous product improvements and to meet changing market conditions, the builder reserves the right to modify maps, floorplans, exterior specifications, features, prices and product types without prior notice or obligation. Some features may vary from plan to plan. All maps, plans, and elevation renderings are artist's conceptions and not necessarily to scale. All square footages are approximate. Landscape may vary as to maturity, number and species.



A/C Area	1513 SQ. FT.
Garage	396 SQ. FT.
Entry	42 SQ. FT.
<u>TOTAL</u>	<u>1951 SQ. FT.</u>
W/opt. cov.patio	140 SQ. FT.
<u>TOTAL cov.area</u>	<u>2091 SQ. FT.*</u>
	*w/option
Lanai	48 SQ. FT.
Patio	41 SQ. FT.




TRANSEASTERN HOMES
BUILT WITH PRIDE

Victoria Grove



For more information call 561-333-9696 • www.victoriagroves.com

Directions: Turnpike heading north: Exit Lake Worth Rd, go west to US 441 (SR7), turn right (north) 3.5 miles to Anthony Groves Rd, west side.
Turnpike heading south: Exit Okeechobee Blvd, go west to US 441 (SR7) turn left (south) passed Southern Blvd, west side.