

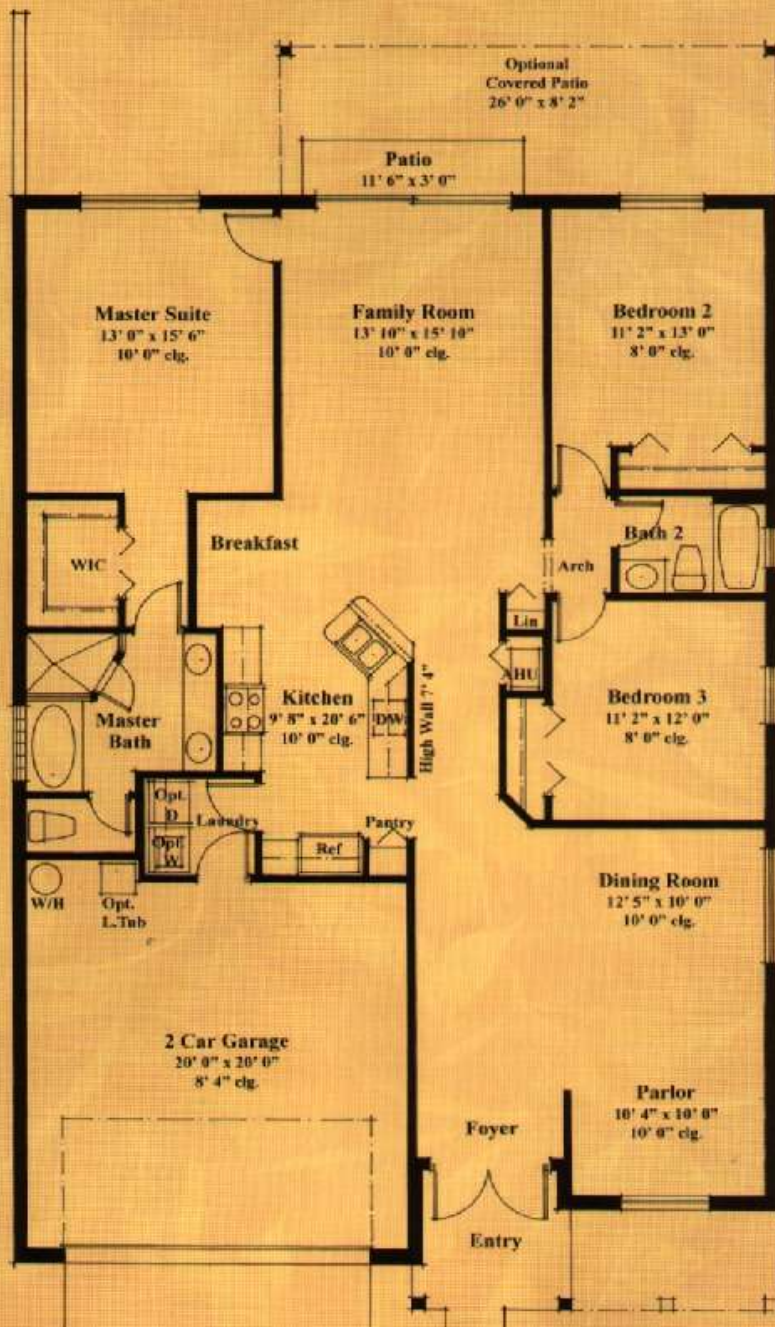
ELEVATION A



ELEVATION B



In the interest of continuous product improvements and to meet changing market conditions, the builder reserves the right to modify maps, floorplans, exterior, specifications, features, prices and product types without prior notice or obligation. Some features may vary from plan to plan. All maps, plans, and elevation renderings are artist's conceptions and not necessarily to scale. All square footages are approximate. Landscape may vary as to maturity, number and species.



A/C Area	1812 SQ. FT.
Garage	439 SQ. FT.
Entry	34 SQ. FT.
TOTAL	2285 SQ. FT.
W/opt. cov.patio	204 SQ. FT.
TOTAL cov.area	2489 SQ. FT.*
Patio	35 SQ. FT.

*w/option





TRANSEASTERN MOVIES
 BUILT WITH PRIDE

Victoria Grove

For more information call 561-333-9696 • www.victoriagroves.com

Directions: Turnpike heading north: Exit Lake Worth Rd. go west to US 441 (SR7), turn right (north) 3.5 miles to Anthony Graves Rd. west side.
 Turnpike heading south: Exit Okeechobee Blvd. go west to US 441 (SR7) turn left (south) passed Southern Blvd. west side.